

Images are of 5th floor and indicative only

177

THE YARDS  
COVENT GARDEN

— SLINGSBY PLACE —

4TH FLOOR





## OVERVIEW

- 17 Slingsby Place is situated within The Yards, Covent Garden with a courtyard reception and commissionaire
- 4th floor 2,952 sq ft / 274 sq m
- Benefitting from a design led fit out and furnishings
- Excellent natural light
- Open plan kitchenette and dining
- Demised WCs and shower access to bike storage
- New LED lighting
- Perimeter air conditioning
- Passenger lift
- Updated entrance lobby



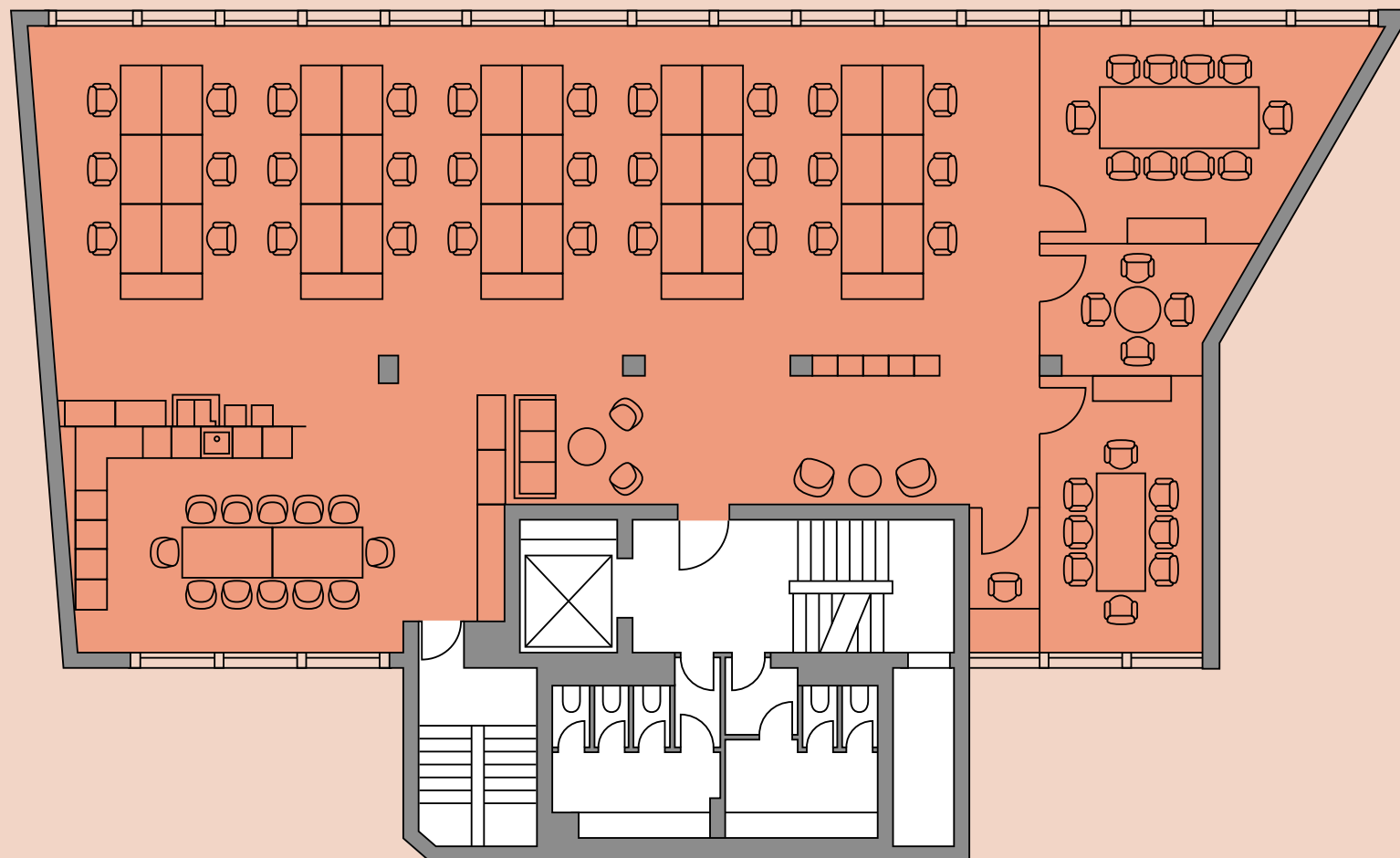
## AVAILABILITY & FLOOR PLAN

### FOURTH FLOOR

2,952 sq ft (274 sq m)

— Fit out specification:

- 30 x desks
- 1 x boardroom
- 2 x meeting rooms
- 1 x focus room
- Breakout area
- Fitted kitchenette & dining area
- Client waiting area
- Storage









# ALL IN OUR BACKYARDS

The Yards is a beautiful, pedestrian-only courtyard, that is home to a fantastic array of some of London's best al fresco restaurants, including the original Dishoom, in addition to a live music venue, boutique retail, best-in-class office space and residential apartments.

The Yards have been revamped with award winning lighting installations, new signage and way-finding, seasonal pop ups and extensive planting, offering healthy and green outdoor space on the doorstep.

With multiple access points, The Yards offers calm and landscaped walk ways into Covent Garden, Leicester Square and Tottenham Court Road; the latter providing speedy access across London via the Elizabeth Line.

Have it all in your backyard.





