

17

SLINGSBY PLACE

4TH FLOOR

2,952 SQ FT OF NEWLY REFURBISHED
CAT A+ WORKSPACE

THE YARDS
COVENT GARDEN





OVERVIEW

- 17 Slingsby Place is situated within The Yards, Covent Garden with a courtyard reception and commissionaire
- 4th floor 2,952 sq ft / 274 sq m
- Benefitting from a design led fit out and furnishings
- Excellent natural light
- Generous WC provisions
- Access to bike storage and shower facilities
- New LED lighting
- Perimeter air conditioning
- Passenger lift
- Fibre connectivity
- EPC C

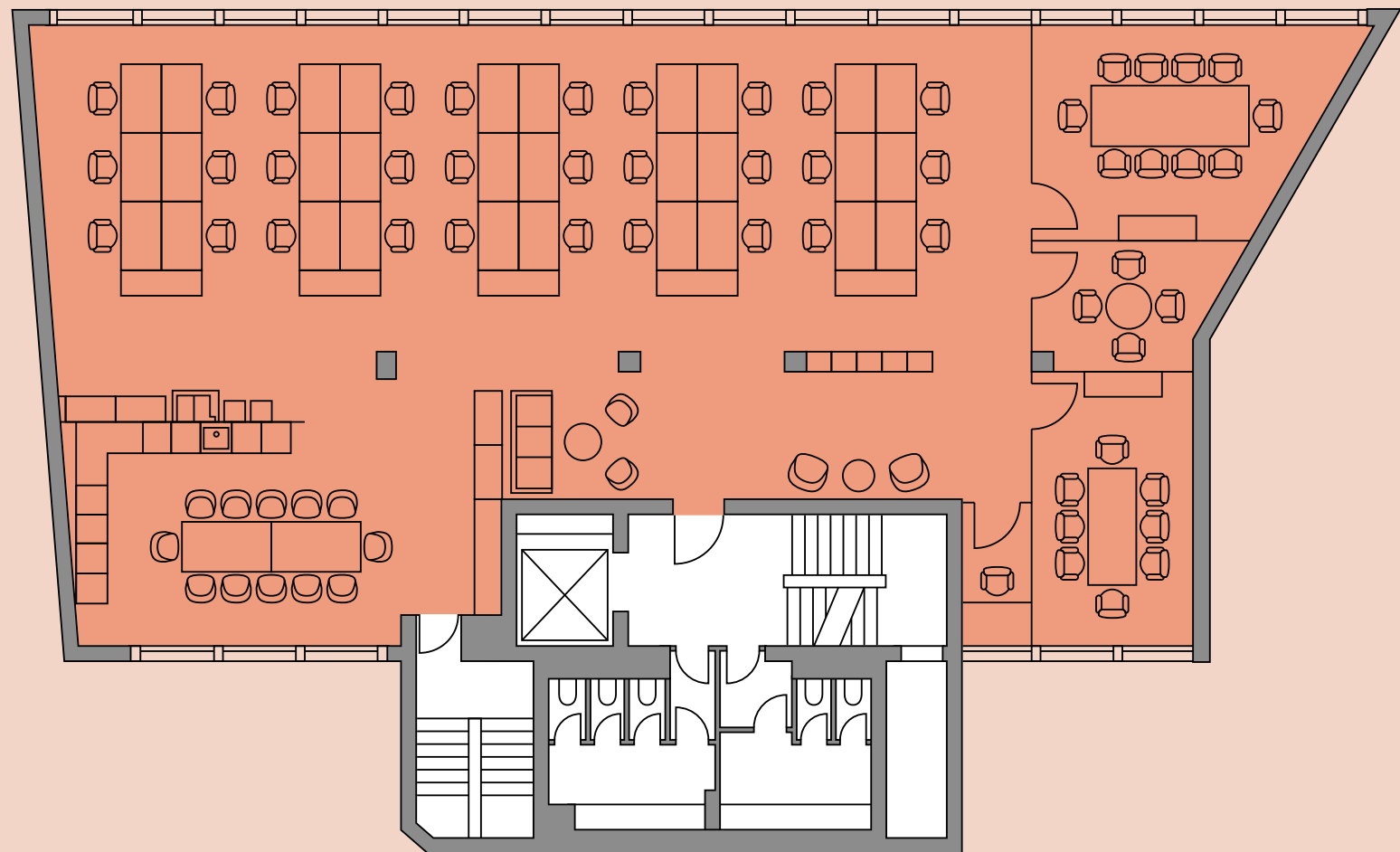


AVAILABILITY & FLOOR PLAN

FOURTH FLOOR 2,952 SQ FT / 274 SQ M

— Fit out specification:

- 30 x desks
- 1 x boardroom
- 2 x meeting rooms
- 1 x focus room
- Breakout area
- Fitted kitchenette & dining area
- Client waiting area
- Storage



DESIGN LED FIT OUT



ALL IN OUR BACKYARDS

The Yards is a beautiful, pedestrian-only courtyard, that is home to a fantastic array of some of London's best al fresco restaurants, including the original Dishoom, in addition to a live music venue, boutique retail, best-in-class office space and residential apartments.

The Yards have been revamped with award winning lighting installations, new signage and way-finding, seasonal pop ups and extensive planting, offering healthy and green outdoor space on the doorstep.

With multiple access points, The Yards offers calm and landscaped walk ways into Covent Garden, Leicester Square and Tottenham Court Road; the latter providing speedy access across London via the Elizabeth Line.

Covent Garden will also soon welcome the much-anticipated 500,000 sq ft Guinness microbrewery, cultural hub and rooftop bar at Old Brewer's Yard.

HAVE IT ALL IN YOUR BACKYARD.



GET IN TOUCH



SIMON LEE

JAMES GUYER

07769 745 449

07885 770 728

simon@stage-re.co.uk

james@stage-re.co.uk

BLUEBOOK

CHRIS WATKIN

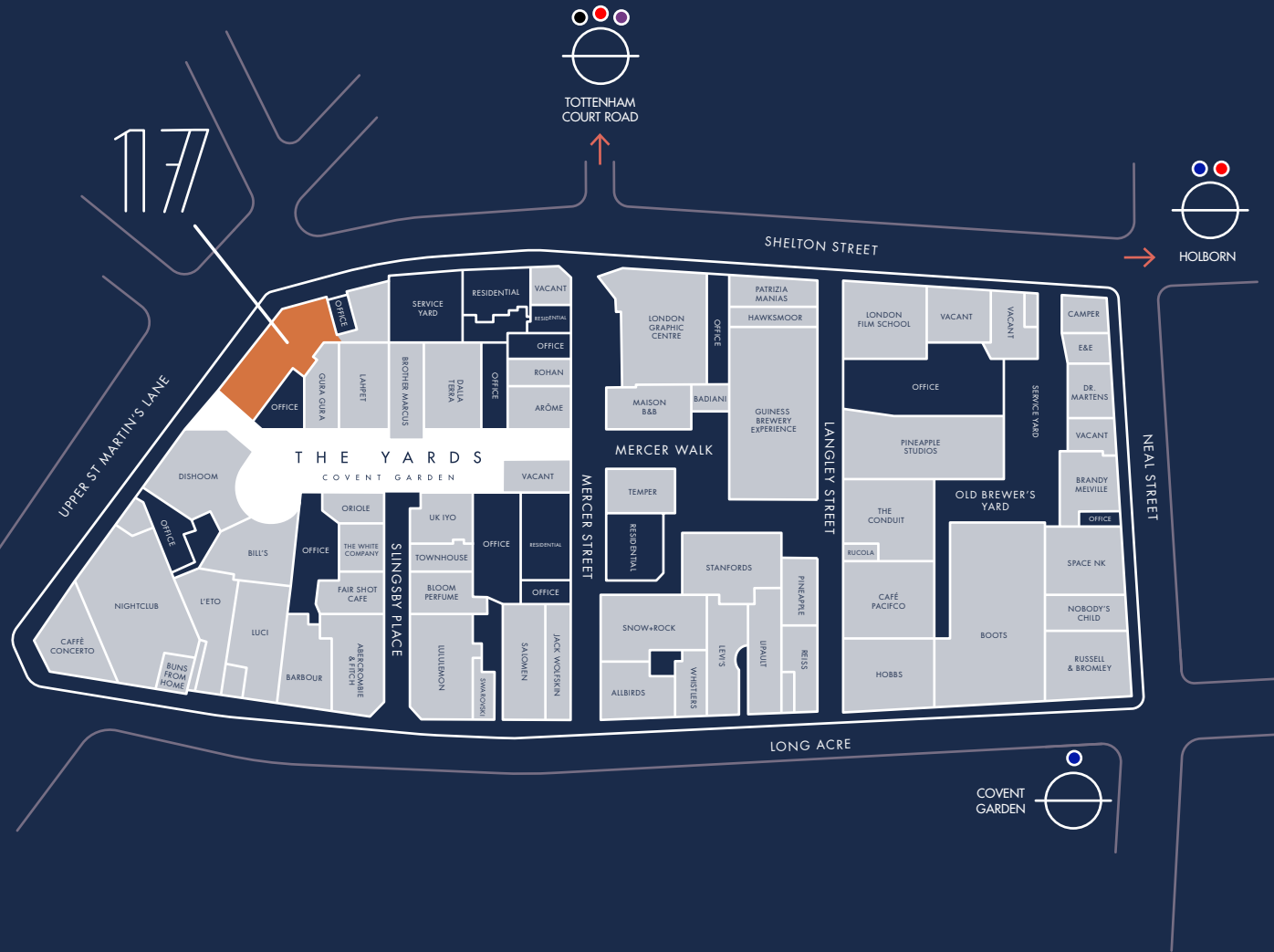
GEORGE KNOWLES

07730 066 523

07565 502 931

chris@bluebooklondon.co.uk

george@bluebooklondon.co.uk



THEYARDS COVENT GARDEN.LONDON
THEYARDS COVENT GARDEN.CO.UK