

17

SLINGSBY PLACE

3RD FLOOR

2,732 SQ FT OF NEWLY REFURBISHED
CAT A+ WORKSPACE

THE YARDS
COVENT GARDEN





CGI for indicative purposes.

OVERVIEW

- 17 Slingsby Place is a prominent multi-let office building within The Yards.
- Courtyard facing manned reception
- All floors benefit from a dual aspects and excellent natural light



CGI for indicative purposes.



CGI for indicative purposes.

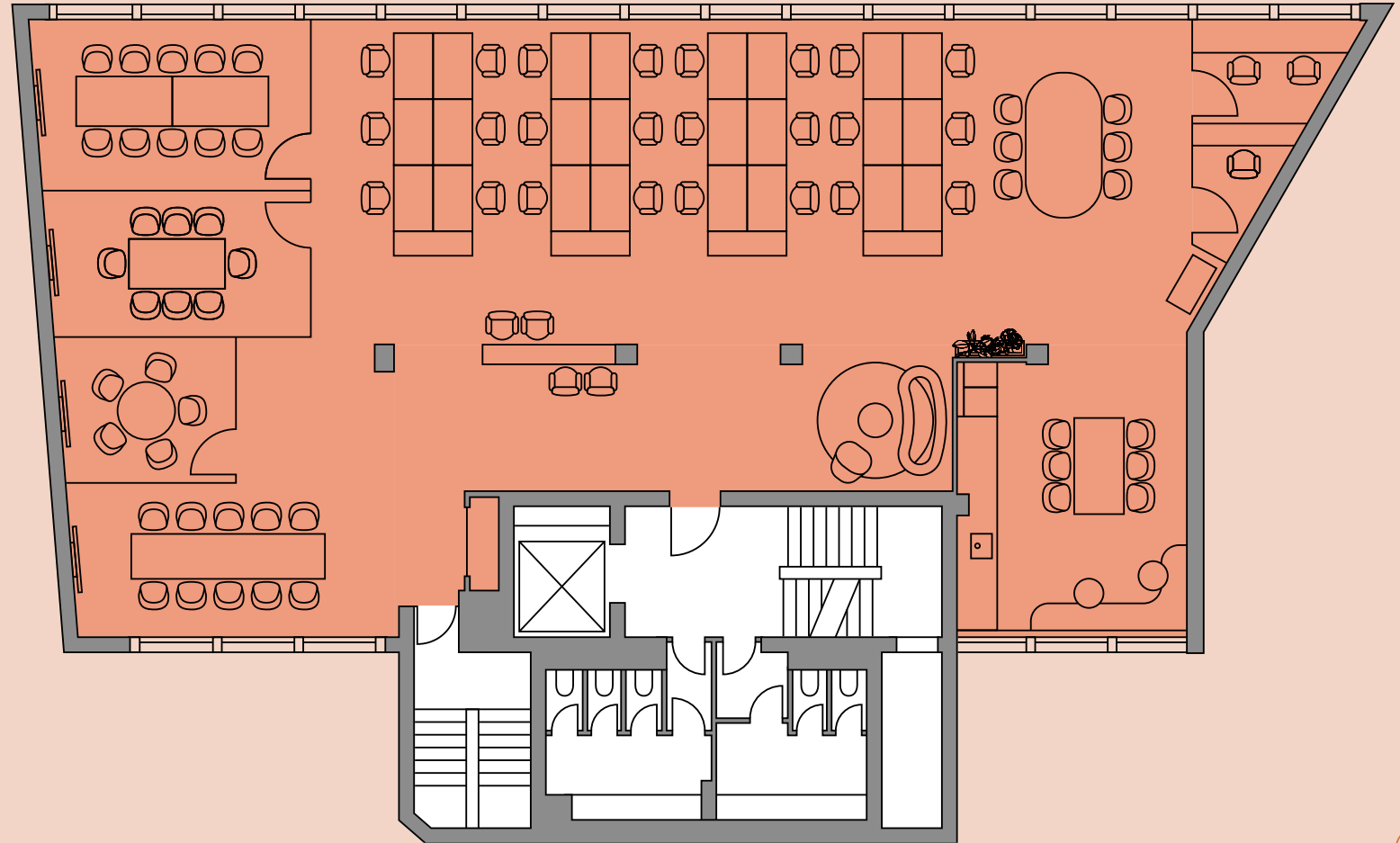
KEY FEATURES

- Design-led fit out and furnishings
- Perimeter air conditioning
- New LED lighting
- Fibre connectivity
- Courtyard facing manned reception
- Common parts WCs and showers
- Access to secure cycle storage
- Passenger lift
- EPC-B

AVAILABILITY & FLOOR PLAN

THIRD FLOOR 2,732 SQ FT / 254 SQ M

- Fit out specification:
 - 24 workstations
 - 6 person workbench
 - 10-person boardroom
 - 8-person meeting room
 - 5-person meeting room
 - 2 x focus rooms
 - Breakout and collaboration areas
 - Kitchenette and dining area
 - Arrival lounge





CGI for indicative purposes.

ALL IN OUR BACKYARDS

The Yards is a beautiful, pedestrian-only courtyard, that is home to a fantastic array of some of London's best al fresco restaurants, including the original Dishoom, in addition to a live music venue, boutique retail, best-in-class office space and residential apartments.

The Yards have been revamped with award winning lighting installations, new signage and way-finding, seasonal pop ups and extensive planting, offering healthy and green outdoor space on the doorstep.

With multiple access points, The Yards offers calm and landscaped walk ways into Covent Garden, Leicester Square and Tottenham Court Road; the latter providing speedy access across London via the Elizabeth Line.

Covent Garden will also soon welcome the much-anticipated 500,000 sq ft Guinness microbrewery, cultural hub and rooftop bar at Old Brewer's Yard.

HAVE IT ALL IN YOUR BACKYARD.



